



# Council of Chairs of Canadian Earth Science Departments – CCCESD Meeting

Tiffany Lancaster, Program Officer, Geosciences EG, NSERC

Kenn Rankine, Program Officer, RTI, Ship Time, NRS, NSERC

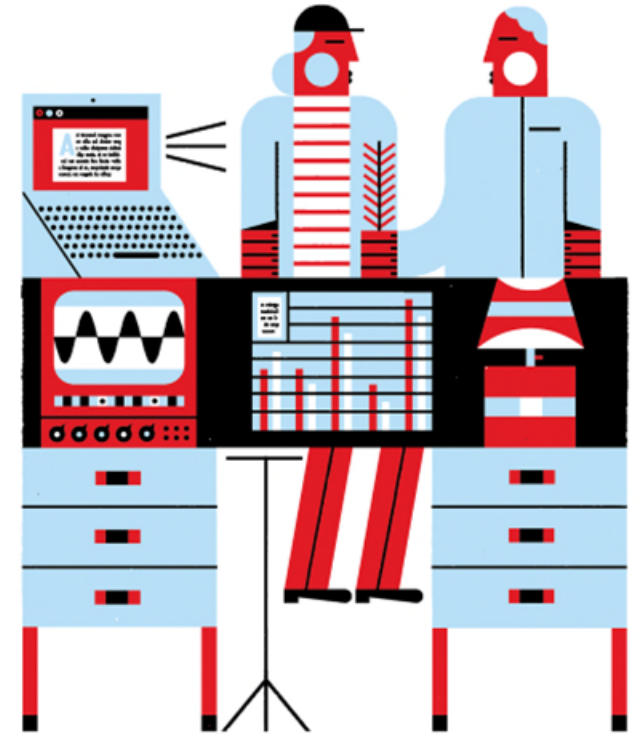
Rachel Desrochers, Incoming-Team Leader, Environmental Sciences NSERC

Elizabeth Boston, Director, NSERC, Mathematical, Environmental and Physical Sciences

**October 29, 2021**

# Table of contents

1. NSERC News
2. Competition 2021 Results
3. Programs and Policy Updates



# NSERC 2030 | A Strategic Plan

## Introduction

- In early 2021, NSERC launched engagement activities for its next strategic plan, *NSERC 2030*
- The plan will be released in Spring 2022
- There will be a number of opportunities for dialogue with NSERC – the process is as important as the plan itself
- The new plan replaces the previous NSERC Strategic Plan (2015-2020)



[https://www.nserc-crsng.gc.ca/NSERC-CRSNG/NSERC2030-CRSNG2030/index\\_eng.asp](https://www.nserc-crsng.gc.ca/NSERC-CRSNG/NSERC2030-CRSNG2030/index_eng.asp)



Send us your questions, comments and ideas at:  
[nserc2030crsng@nserc-crsng.gc.ca](mailto:nserc2030crsng@nserc-crsng.gc.ca)

## Timeline

### Phase 1 | Intelligence Gathering

#### 2021

February – March	Survey / questionnaire
April	Targeted Interviews
April	CCA assessment results

### Phase 2 | Analysis and Discussions

May – August	Develop discussion papers
September	Make briefs/ discussion papers public
September – October	Workshops/ roundtables

### Phase 3 | Key findings and validation

December	Draft plan
----------	------------

#### 2022

January – February	Validation
March	Finalize plan
April	Editing/ translation
May	Release

## NSERC News

# Research Excellence Highlights

- [Tri-agency Equity, Diversity and Inclusion \(EDI\) Action Plan](#) to address systemic barriers and increase equity, diversity and inclusion in the postsecondary research ecosystem
- Indigenous strategic plan, [Setting new directions to support Indigenous research and research training in Canada](#)
- [San Francisco Declaration on Research Assessment](#) (DORA) signatory
- Consult our web site and social media for all of NSERC's activities

**[www.nserc-crsng.gc.ca](http://www.nserc-crsng.gc.ca)**

** [@nserc\\_crsng](https://twitter.com/nserc_crsng) / [@crsng\\_nserc](https://twitter.com/crsng_nserc)**

** [facebook.com/nserccanada](https://facebook.com/nserccanada) / [facebook.com/crsngcanada](https://facebook.com/crsngcanada)**



# Research Security

- Espionage and foreign interference activities pose real threats to Canadian research integrity, intellectual property and business interests.
- Since 2018, the federal granting agencies have been working with the **Government of Canada - Universities Working group** to ensure the security and integrity of publicly funded research in Canada.
- In September 2020, the Working Group published the **Safeguarding your Research** portal – [science.gc.ca/safeguarding-your-research/](https://science.gc.ca/safeguarding-your-research/)
- The Government of Canada tasked the Working Group with the development of **National Security Guidelines for Research Partnerships**. These guidelines are being applied initially to the NSERC Alliance funding program when private sector organizations are involved in the partnership. [https://www.science.gc.ca/eic/site/063.nsf/eng/h\\_98257.html](https://www.science.gc.ca/eic/site/063.nsf/eng/h_98257.html)
- The granting agencies are also reviewing their security policies and procedures, following national and international best practices.

## Research Security



All researchers and administrators are encouraged to consult the following resources for more information on how to safeguard research and innovation:

- [Safeguarding Your Research Portal](#): guidance, information, and tools, and case studies.
- [Safeguarding Science](#): Interactive workshop from Public Safety Canada
- [Canadian Centre for Cyber Security](#): Hosts resources on the cyber threat environment, including interactive content, publications, alerts, and advisories
- [Canadian Cyber Security Tool](#): Voluntary self-assessment survey
- [La cybersécurité en milieu universitaire](#), a free online course offered by SERENE-RISC and the University of Montreal from April 28 – November 30, 2021 (French only)

Other Updates

# Research Data Management

## Tri-Agency Research Data Management Policy

Launched March 2021: [https://science.gc.ca/eic/site/063.nsf/eng/h\\_97610.html](https://science.gc.ca/eic/site/063.nsf/eng/h_97610.html)

### Policy Requirements

1. **Institutional strategies:** By **March 1, 2023**, research institutions subject to this requirement must post their RDM strategies and notify the agencies when they have been completed.
2. **Data management plans:** By **spring 2022**, the agencies will identify the initial set of funding opportunities subject to the DMP requirement. The agencies will pilot the DMP requirement in targeted funding opportunities before this date.
3. **Data deposit:** After reviewing the institutional strategies and in line with the readiness of the Canadian research community, the agencies will phase in the deposit requirement.

Frequently Asked Questions: [http://science.gc.ca/eic/site/063.nsf/eng/h\\_97609.html](http://science.gc.ca/eic/site/063.nsf/eng/h_97609.html)

Contact: [ResearchData-Donneesderecherche@nserc-crsng.gc.ca](mailto:ResearchData-Donneesderecherche@nserc-crsng.gc.ca)

# 2. Competition 2021 Results





# Thank You!

## 2008 Discovery Grants (DG) Applications

430+ Evaluation Group (EG) Members

10 045+ Reviews by EG members

5857+ External Reviewers Reports

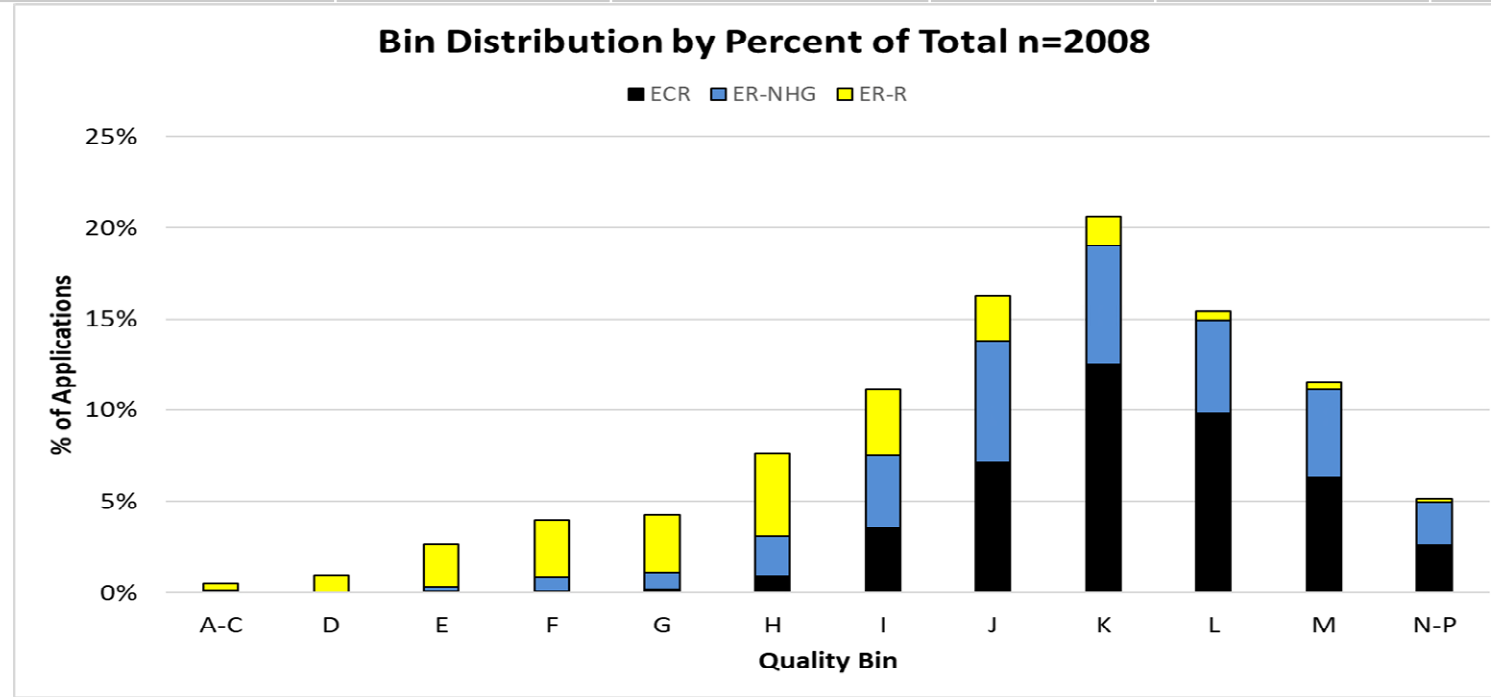
*I'd like to offer my sincere thanks to all committee members and external reviewers for their hard work and dedication in the 2021 Discovery Grants competition, which was conducted virtually in its entirety for the first time ever. Your tremendous efforts during these unprecedented times have helped keep Canada's research enterprise strong in the midst of this pandemic. I hope that you, your families, and your colleagues are safe and healthy, and remain so in the future.*

**– Alejandro Adem, NSERC President**

## 2021 Discovery Grants Results – Overview

# Overall DG – Results by Applicant Category

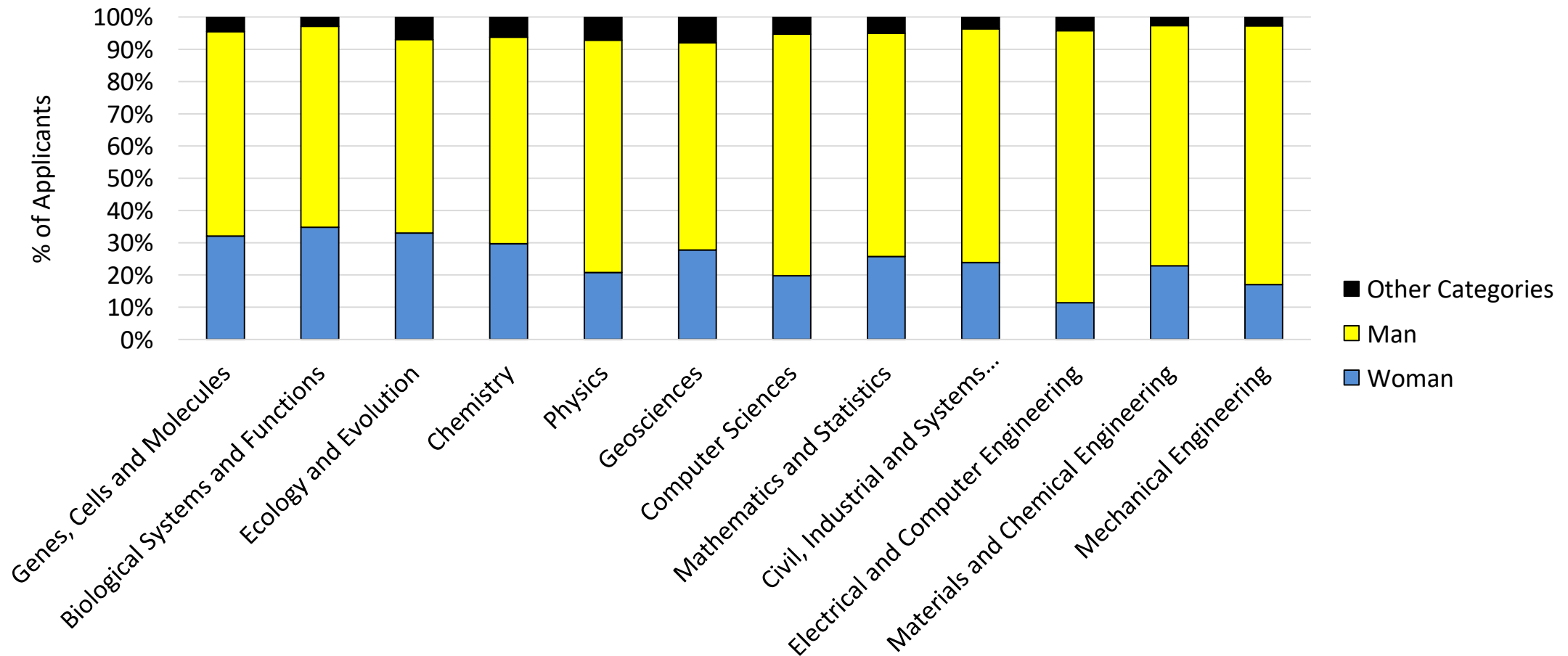
	Early Career Researcher (ECR)	Established Researchers (ER)			Total
		Not Holding a Grant (ER-NHG)	Returning (ER-R)	All Established Researchers	
# of applications	866	676	466	1142	2008
# of awards	490	265	394	659	1149
Success Rate	57%	39%	85%	58%	57%
Average Grant (yearly)	\$29,383	\$33,442	\$44,790	\$40,227	\$35,602



## 2021 Discovery Grants Results – Overview

# Overall DG – Equity, Diversity and Inclusion (EDI)

Gender Ratio of Applicants in Each EG



## 2021 Discovery Grants Results – Overview

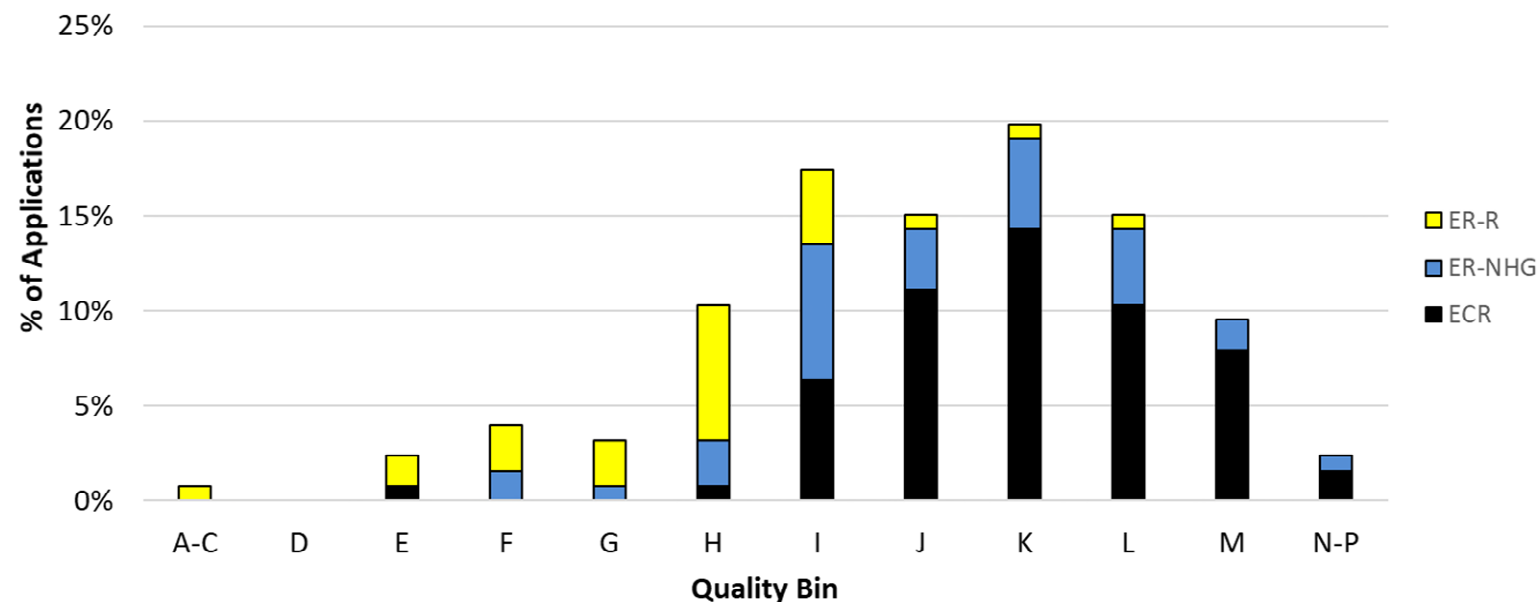
# Overall DG – Equity, Diversity and Inclusion (EDI)

		Women	Men	Other Categories
Early Career Researchers (ECR)	Number of Awards	168	311	11
	Success rate	57%	56%	58%
Established Researchers Returning (ER-R)	Number of Awards	90	273	31
	Success rate	90%	82%	97%
Established Researchers Not Holding a Grant (ER-NHG)	Number of Awards	58	183	24
	Success rate	61%	55%	70%

## 2021 Discovery Grants Results by EG

# EG1506 – Geosciences – CY2021

	Early Career Researcher	Established Researchers (ER)			Overall
	(ECR)	Not Holding a Grant (ER-NHG)	Returning (ER-R)	All Established Researchers	
# of applications	67	33	26	59	126
# of awards	42	16	23	39	81
Success Rate	63%	48%	88%	66%	64%
Average Grant (yearly)	\$29,929	\$32,938	\$42,191	\$38,938	\$34,005



## 2021 Discovery Grants Results – Overview

### Overall DG – Results by Applicant Category

	Early Career Researcher (ECR)	Established Researchers (ER)			Overall
		Not Holding a Grant (ER-NHG)	Returning (ER-R)	All ER	
# of applications – ALL	866	676	466	1142	2008
Geosciences	67	33	26	59	126
# of awards – ALL	490	265	394	659	1149
Geosciences	42	16	23	39	81
Success Rate – ALL	57%	39%	85%	57%	57%
Geosciences	63%	48%	88%	66%	64%

## Other Research Grants Results

# Research Tools and Instruments (RTI)

Program webpage:

[https://www.nserc-crsng.gc.ca/professors-professeurs/rtii-oiri/rti-oir\\_eng.asp](https://www.nserc-crsng.gc.ca/professors-professeurs/rtii-oiri/rti-oir_eng.asp)

	2017	2018	2019	2020	2021*
Budget	\$30.5M	\$25.1M	\$25.3M	\$30.7M	\$25.3M
# Appl.	748	1043	1005	893	811
# Funded	241	208	210	248	201
Success Rate	32%	20%	21%	28%	27%
Funding Rate	33%	21%	22%	29%	25%

## Other Research Grants Results

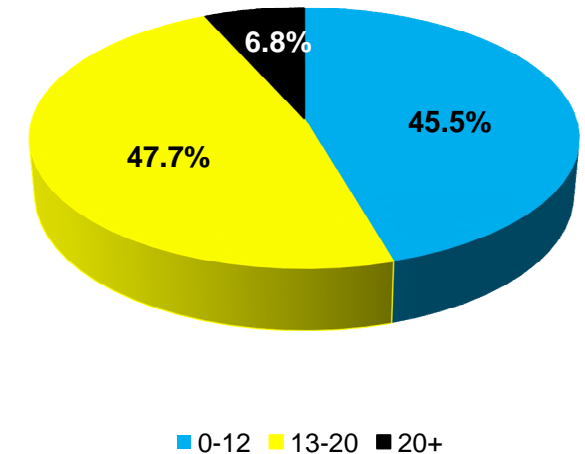
# Discovery Accelerator Supplements

Program webpage:

[https://www.nserc-crsng.gc.ca/Professors-Professeurs/Grants-Subs/DGAS-SGSA\\_eng.asp](https://www.nserc-crsng.gc.ca/Professors-Professeurs/Grants-Subs/DGAS-SGSA_eng.asp)

Evaluation Group	Awards*
Genes, Cells and Molecules (1501)	5
Biological Systems and Functions (1502)	6
Evolution and Ecology (1503)	3
Chemistry (1504)	3
Physics (1505)	3
Geosciences (1506)	3
Computer Science (1507)	6
Mathematics and Statistics (1508)	3
Civil, Industrial and Systems Engineering (1509)	4
Electrical and Computer Engineering (1510)	3
Materials and Chemical Engineering (1511)	1
Mechanical Engineering (1512)	3
Subatomic Physics (19)	1
<b>TOTAL:</b>	<b>44</b>

**2021 DAS Recipients  
Years from PhD**





## 2021 Competition Results

# Statistics Package

**For more information on DG and other Research Grants results:**

- The 2021 competition statistics package has been posted on web:  
[https://www.nserc-crsng.gc.ca/professors-professeurs/discoverygrants-subventionsdecouverte/index\\_eng.asp](https://www.nserc-crsng.gc.ca/professors-professeurs/discoverygrants-subventionsdecouverte/index_eng.asp)
- **New resource:** Competition Statistics Dashboards for DG and RTI.

Contact [resgrant@nserc-crsng.gc.ca](mailto:resgrant@nserc-crsng.gc.ca) if you have any questions.

# 3. Programs and Policy Updates



## RGS Program Updates

# 2022 Discovery Grants Competition

In light of the continuing uncertainty around the COVID-19 pandemic, and to ensure effective and timely delivery of the 2022 Discovery Grants competition, the peer review of applications will take place by videoconference.

NSERC is committed to maintaining a peer review process of the highest quality, including fairness and consistency between evaluating committees and across competition years.

**Contact:** [resgrant@nserc-crsng.gc.ca](mailto:resgrant@nserc-crsng.gc.ca)

## RGS Program Updates

# Support for Early Career Researchers (ECRs)

- Early Career Researchers are applicants who have held an independent academic position for 5 years or less.
  - Five year window adjusted for any eligible delay in research
  - All eligible leaves taken (e.g. parental, bereavement, illness of applicant or family) are now credited as twice the amount of time taken (*started Fall 2020*)
- NSERC devotes additional funds to support ECRs through
  - Increases to Discovery Grants
  - Discovery Launch Supplement
- ECRs re-applying for the first time have the option of extending their DG by one year with funds in addition to the Discovery Grants one-year extension with funds due to COVID-19.

## RGS Program Updates

# Discovery Grant Application Delays in Research - Leaves Attachment

- Applicants who report an eligible leave of absence are entitled to list additional contributions beyond the last six years, for a period equivalent to the duration of the leave
- Contributions prior to the last six years can be recorded in:
  - A new 2-page attachment
  - *Past contributions to the training of HQP* section
  - *Most significant contributions to research* section
  - *Samples of research contributions* section

***Eligible leaves of absence include delays due to COVID-19***

## RGS Program Updates

# New Guidelines: delays due to COVID-19

- NSERC recognizes that the COVID-19 pandemic is affecting researchers' and students' capacity to conduct their regular research and training activities
- NSERC has developed general [guidelines for the consideration of COVID-19-related impacts on research](#) aiming to provide direction on how to describe these impacts in an application
- Implemented in the most recent Discovery Grant Competition

## Equity, Diversity and Inclusion

# NSERC Leave Policies

### Primary Caregivers (Pilot)

- Researchers who become primary caregivers following the birth or adoption of a child and who are eligible for maternity or parental leave through the institution but decline the leave, may be eligible to receive a one-year grant extension with funds.

### Family and Medical Leave

- Grant holders who plan to take family-related leave or medical leave may be eligible for a grant extension with funds for up to two years.

### **Paid Maternity / Parental Leave for Students and Postdoctoral Fellows paid from Grants**

- Students and Postdoctoral fellows who are paid out of an NSERC grant, and those receiving awards directly from NSERC, are eligible to receive up to 12 months of paid maternity / parental leave.
- The leave supplement will be paid by NSERC.

## COVID-19 Response

# Optional Extensions to Discovery Grants due to COVID-19

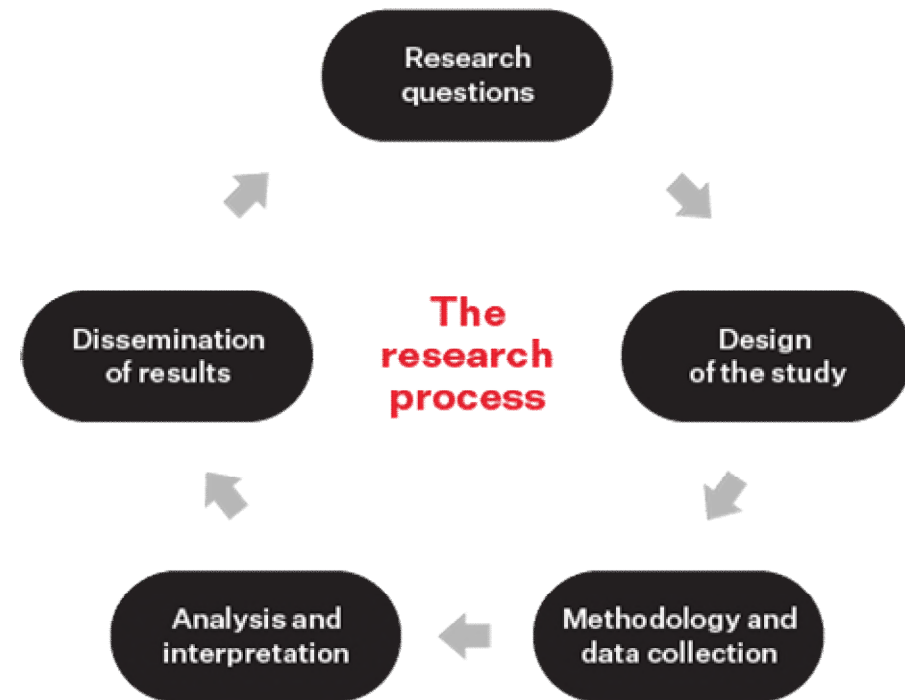
- **With funds: extensions offered to all active DG holders (2020/21)**
  - 1 year with funds at previous level
  - Offered by NSERC to grantees in the last year of funding**Contact:** [resgrant@nserc-crsng.gc.ca](mailto:resgrant@nserc-crsng.gc.ca)
- **Without funds: extensions for grantees in their automatic 1 year for the residual use of DG funds**
  - 1 year time only
  - Via Research Grants Officers
  - For grantees not receiving additional funds**Contact:** [grantsadministration@nserc-crsng.gc.ca](mailto:grantsadministration@nserc-crsng.gc.ca)



## RGS Program Updates

# Resource: EDI considerations at each stage of the research process (New this summer)

- Applying a critical EDI lens through the research process promotes research excellence.
- NSERC developed a resource to assist the research communities served by NSERC with embedding EDI considerations into each or any stage of the research process, where relevant.
- The resource [EDI considerations at each stage of the research process](#) provides detailed guidance and examples relevant to NSE research.



## RGS Program Updates

# Northern Research Supplements (NRS)

### Objective:

- To augment and promote Canadian university-based northern research, training, and community outreach by recognizing the added costs unique to conducting research in the Canadian North.

### Recent changes:

- **Selection Criteria updated:** weighted scoring applied to each criterion; will provide more detailed feedback to applicants
- **Application Process:** submit with DG application and CCV in Research Portal - no longer separate through Online System (Deadline: November 1<sup>st</sup>)

Up to \$25,000/year for duration of the DG award

NRS awards based on peer-review consideration of logistical costs & recognizing outstanding contributions to outreach, engagement, collaboration, & communication initiatives with northerners

Contact: [EnviroSciences-SciencesEnviro@nserc-crsng.gc.ca](mailto:EnviroSciences-SciencesEnviro@nserc-crsng.gc.ca)

## RGS Program Updates

# Ship Time Program (STP)

### Objective:

- Assists with the high costs associated with chartering research vessels in Canada and abroad, in support of on-going Discovery research programs

### Description:

- **NEW: Selection Criteria updated - with weighted scoring applied by committee & more feedback provided to applicants**
- Applicants must hold a Discovery Grant (or be successful in current DG competition)
- Duration usually one year (potential for 2 years of funding, if justified)
- Deadline: September 1st

Contact: [EnviroSciences-SciencesEnviro@nserc-crsng.gc.ca](mailto:EnviroSciences-SciencesEnviro@nserc-crsng.gc.ca)

## RGS Program Updates

# Discovery Grant updates - DAS

### Updates for CY2022:

- Program suspended until further notice
- No new DAS awards, starting CY2022
- Ongoing DAS awards continue to be honoured

NSERC will continue to monitor and assess the future role and objectives of the DAS program as it relates to NSERC's commitment to funding excellence in discovery research and training.

Contact: [resgrant@nserc-crsng.gc.ca](mailto:resgrant@nserc-crsng.gc.ca)

## RGS Program Updates

# RTI Program Update

- Application deadline date is **October 25**; Research Portal opens in August
- **Recent changes:**
  - Changes to selection criteria (names have been shortened, and 2<sup>nd</sup> criterion no longer assesses the excellence of the researcher)
  - Clarified instructions in Budget Justification section and added a template budget table applicants are to use to show tax and currency exchange rates and totals
  - Confirmation of Financial Contribution documents are no longer required and should not be submitted
- **Upcoming changes:**
  - Successful applicants and co-applicants will be ineligible to apply to the following year's RTI competition (i.e. a successful applicant/co-applicant in this year's competition – Application deadline October 25, 2021, will be ineligible to apply to next year's competition – Application deadline October 25, 2022)

## RGS Program Updates

# DND\*/NSERC Discovery Grant Supplements

- Supports unclassified university-based research dedicated to the development of non-weapon specific technologies with dual-use applications in defence and security target areas.
- Each supplement valued at \$120,000 over 3 years (\$40,000 per year)
- Eligibility
  - Researchers applying to current DG competition
  - Proposed research must fit within DND defence and security target areas
- Internal DND committee will select recipients

**Contact:** [dndsuppmdn@nserc-crsng.gc.ca](mailto:dndsuppmdn@nserc-crsng.gc.ca)

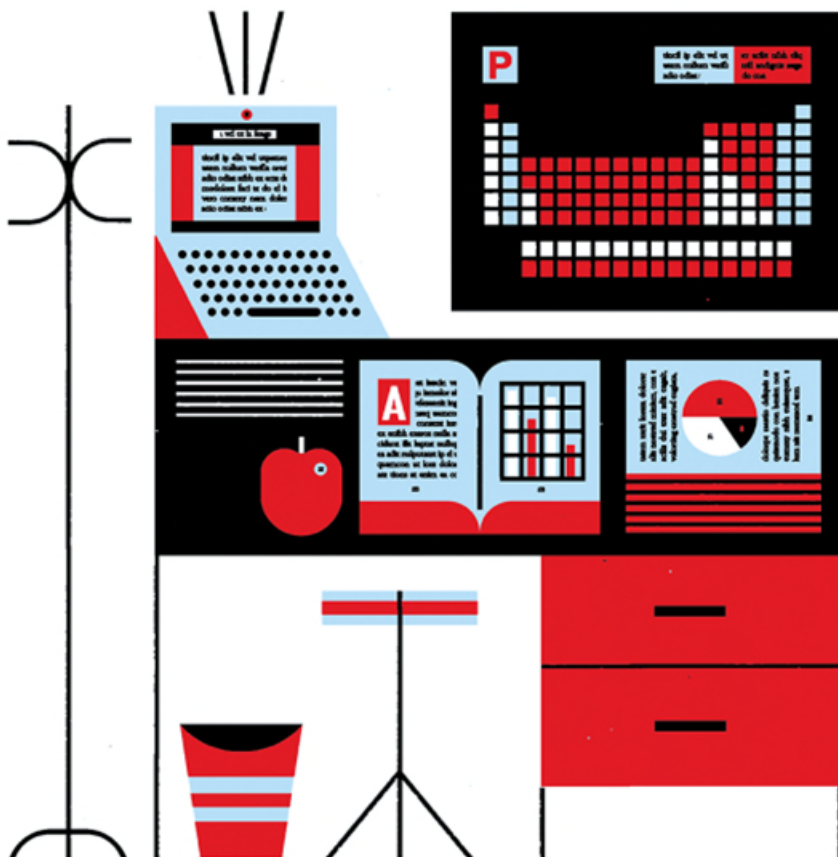
\*DND, Department of National Defence

## RGS Program Updates

# Discovery Development Grant (DDG)

- Small Universities only
- No separate application is required → offered according to DG results
- \$15K/year for 2 years
- May hold twice throughout career
- Need letter of support from their university, indicating what additional measures will be taken to support the individual's research program

**Contact:** [ddg-sdd@nserc-crsng.gc.ca](mailto:ddg-sdd@nserc-crsng.gc.ca)



# Questions?

Discovery Grants program

Tiffany Lancaster

[Tiffany.Lancaster@nserc-crsng.gc.ca](mailto:Tiffany.Lancaster@nserc-crsng.gc.ca)

**NSERC Alliance grants**

1-877-767-1767

[nserc-ontario@nserc-crsng.gc.ca](mailto:nserc-ontario@nserc-crsng.gc.ca)

[alliance@nserc-crsng.gc.ca](mailto:alliance@nserc-crsng.gc.ca)

**Connect with us / Suivez-nous**

 [@nserc\\_crsng](https://twitter.com/nserc_crsng) / [@crsng\\_nserc](https://twitter.com/crsng_nserc)

 [facebook.com/nserccanada](https://facebook.com/nserccanada) / [facebook.com/crsngcanada](https://facebook.com/crsngcanada)