

SUMMARY OF UNIVERSITY ENROLMENTS AND STAFFING IN EARTH SCIENCE DEPARTMENTS IN CANADIAN UNIVERSITIES, TO DECEMBER 2013

Compiled by Rob Raeside, Acadia University, and Alan Beck, UWO

Response rate*: 32/39

Fig. 1. Number of BSc (> year 1), MSc and PhD program registrants

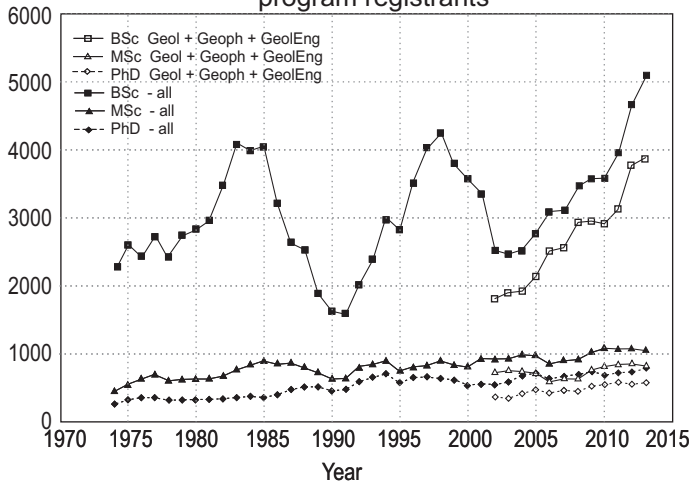


Fig 2. Registrants in service and pre-year 2 courses

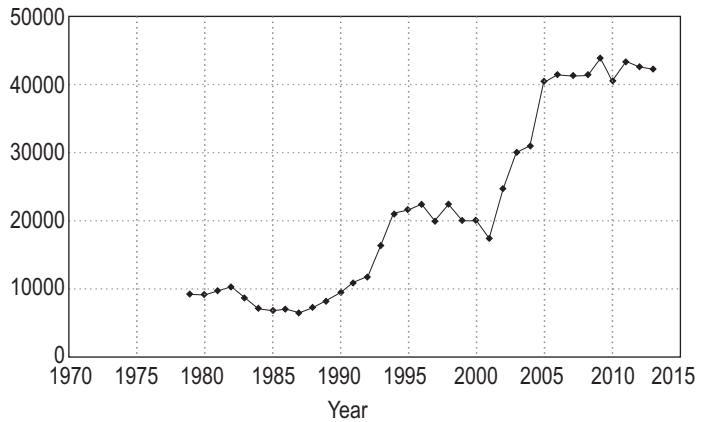


Fig. 3. Numbers of graduated students

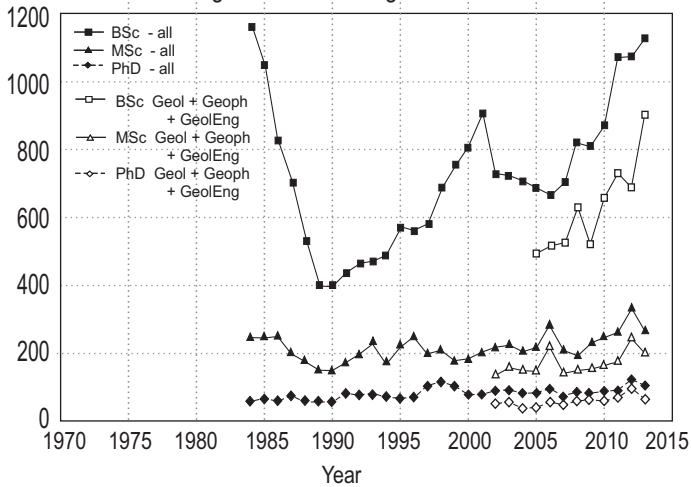


Fig 4. Percentage of females in each of undergraduate, masters, doctoral, and faculty levels

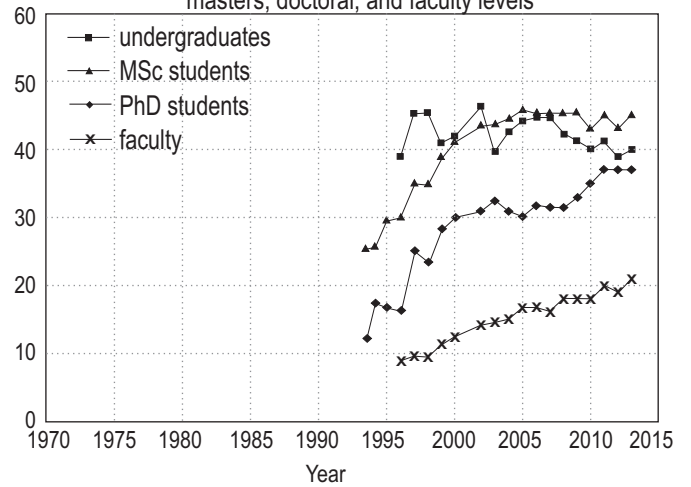


Fig. 5. Numbers of faculty, post-docs and support staff

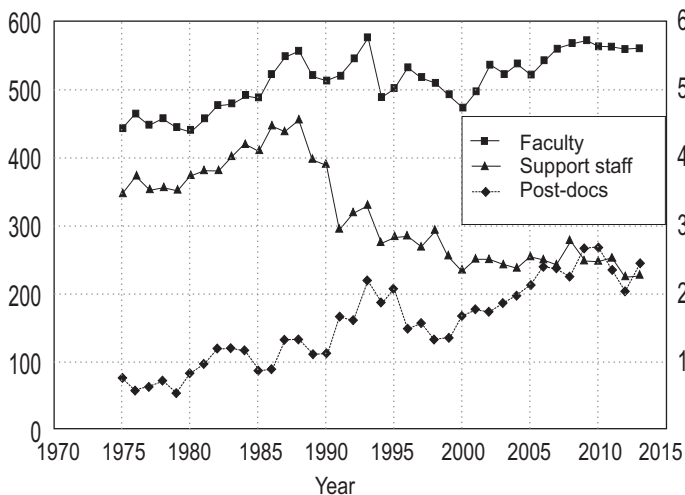
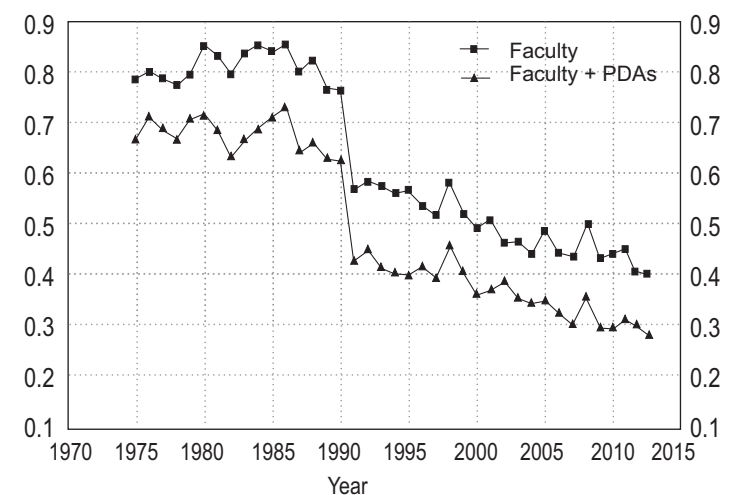


Fig. 6. Ratio of support staff to faculty and post-docs



*32 out of 39 universities have responded so far this year - for those departments not responding, last year's data were used.