

# SUMMARY OF UNIVERSITY ENROLMENTS AND STAFFING IN EARTH SCIENCE DEPARTMENTS IN CANADIAN UNIVERSITIES, TO DECEMBER 2010

Compiled by Rob Raeside, Acadia University, and Alan Beck, UWO

Fig. 1. Number of BSc (> year 1), MSc and PhD program registrants

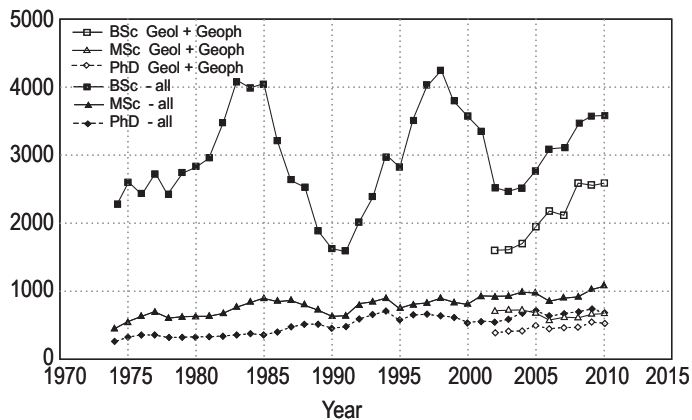


Fig 2. Registrants in service and pre-year 2 courses

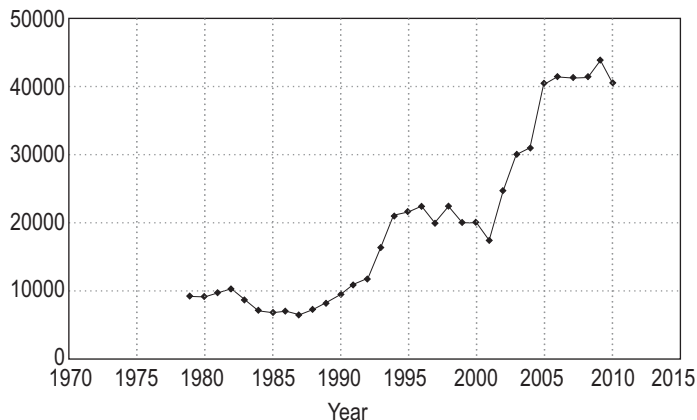


Fig. 3. Numbers of graduated students

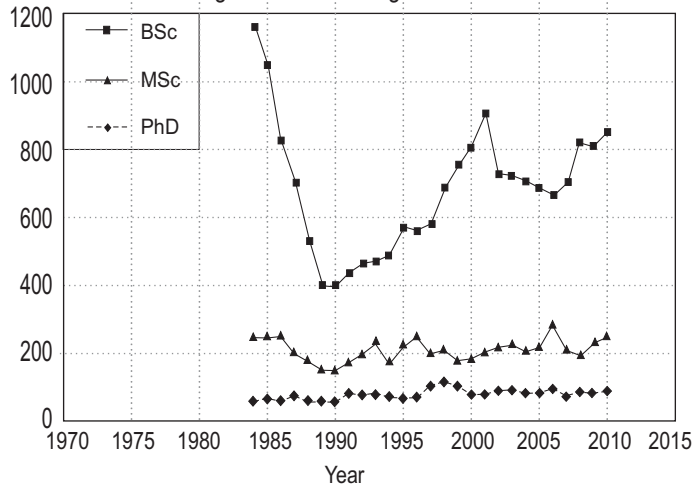


Fig 4. Percentage of females in each of undergraduate, masters, doctoral, and faculty levels

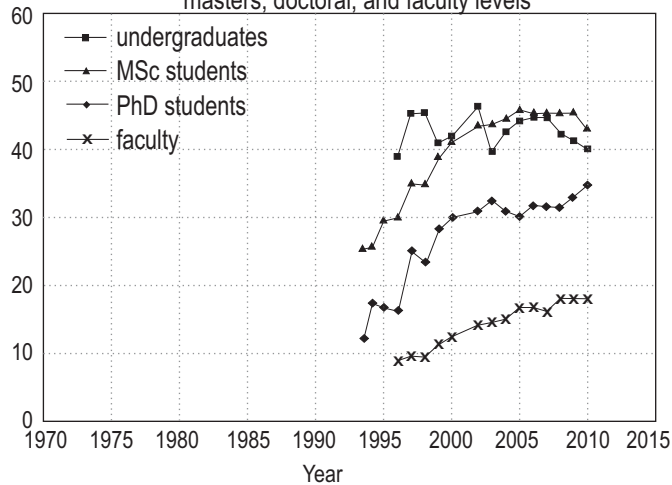


Fig. 5. Numbers of faculty, post-docs and support staff

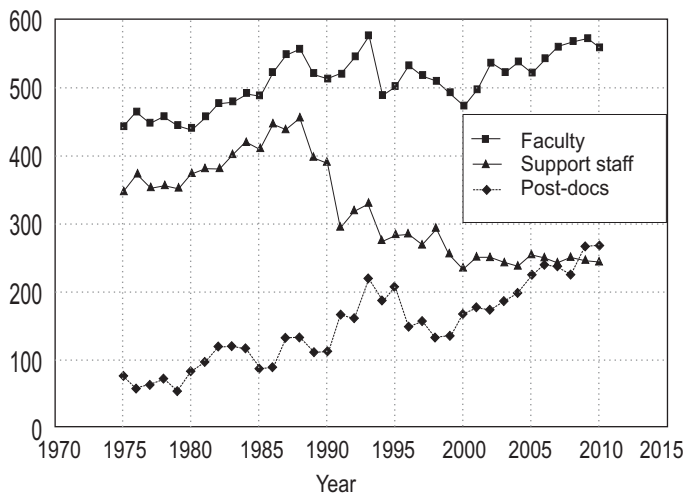


Fig. 6. Ratio of support staff to faculty and post-docs

