

# SUMMARY OF UNIVERSITY ENROLMENTS AND STAFFING IN EARTH SCIENCE DEPARTMENTS IN CANADIAN UNIVERSITIES, TO DECEMBER 2006

Compiled by Rob Raeside, Acadia University, and Alan Beck, UWO

Fig. 1 Number of BSc (> year 1), MSc and PhD program registrants

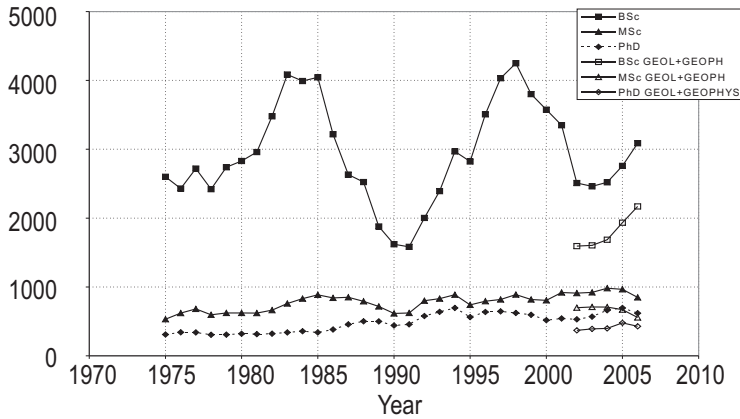


Fig. 2. Registrants in service and pre-year 2 courses

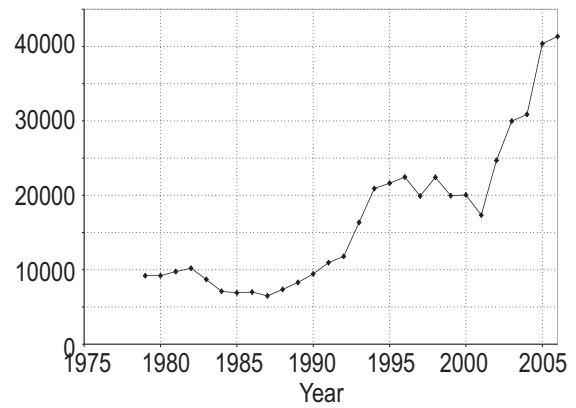


Fig. 3. Numbers of graduated students

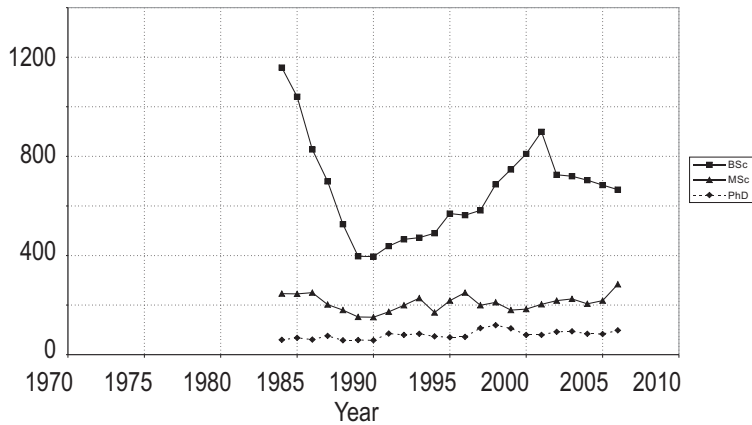


Fig. 4. Faculty age distribution

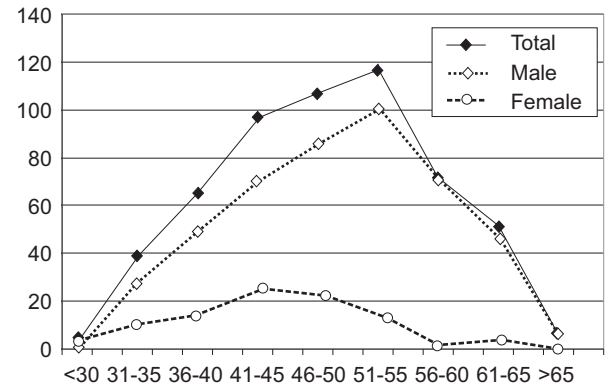


Fig. 5. Numbers of faculty, post-docs and support staff

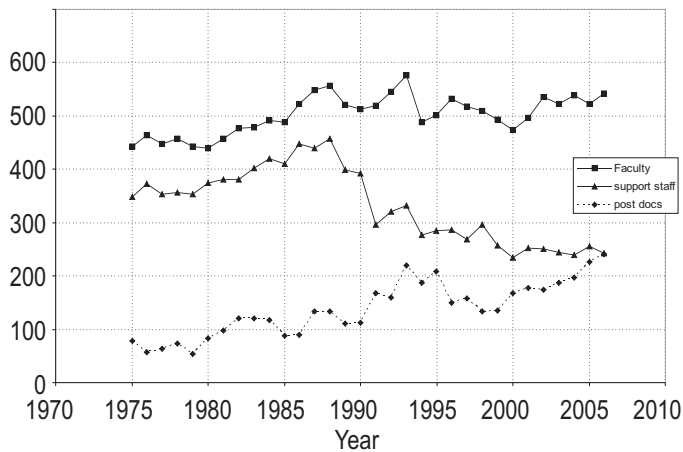


Fig. 6. Ratio of support staff to faculty and post-docs

